



E69-201 & E69-202 Outdoor Gigabit PoE++ Extender Quick Installation Guide

P/N: A625015000G

INTRODUCTION

The E69-201 & E69-202 is a Outdoor Gigabit PoE++ Extender capable of receiving 30W/60W/90W power from PSE. Multiple extenders can be cascaded to increase the cabling distance.

PACKAGE CONTENTS

• 1x PoE Extender	• 1x Quick Installation Guide
-------------------	-------------------------------

IMPORTANT:

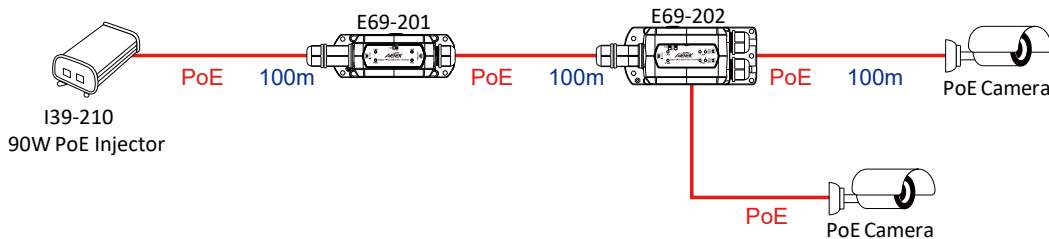
1. Install the device in a ventilated and dry place, that is free of electromagnetic source, vibration, moisture, and dust.
2. Make sure the ventilation openings on the extender are not blocked.
3. Use CAT.5e or 6 UTP/STP cables. Avoid using low-quality cables, which will seriously limit the cabling distance.

CONNECTION

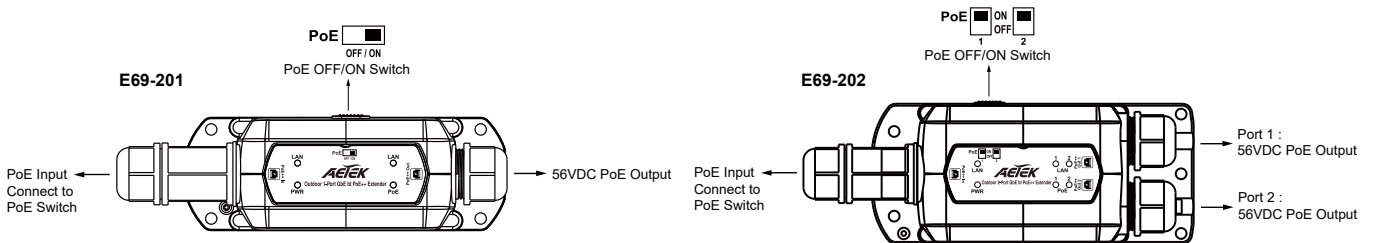
Following are the conditions for making the cabling:

1. Use 18~19Ω, 24AWG CAT.5e cables.
2. Typical cameras stream size feature = 1080p@30fps - 6Mbps; 720p@30fps - 3Mbps.
Make sure the combined bandwidth consumption does not exceed the uplink bandwidth from the PoE switch.

NOTE: There are power losses due to cable resistance.



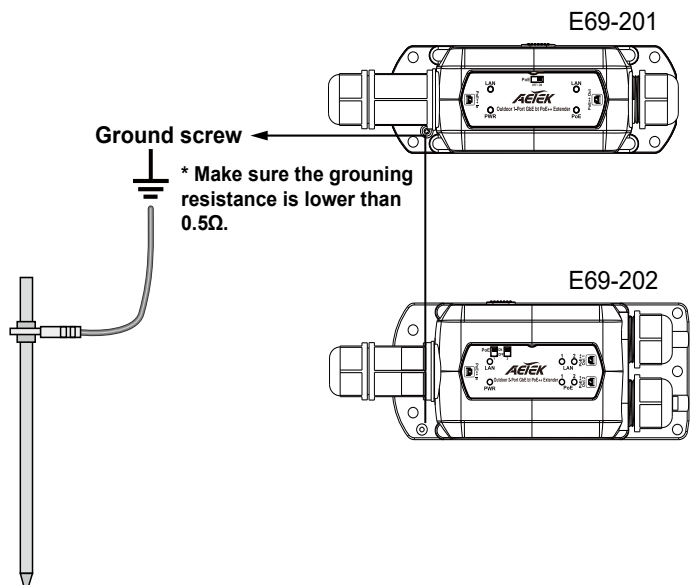
INSTALLATION



IMPORTANT:

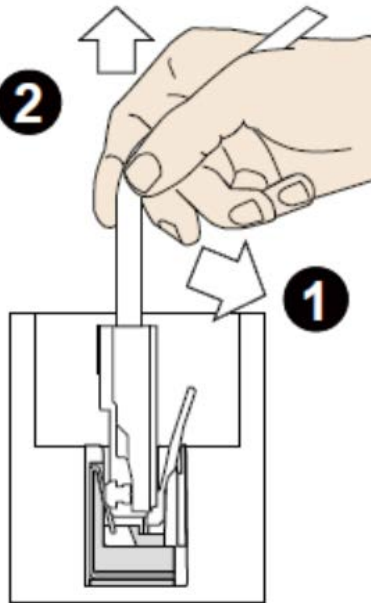
NOTE:

The E69-201 / E69-202 Outdoor PoE Extender must be grounded using a ground wire between the ground screw and earth ground.



PoE Output Port

To disconnect a LAN cable, loosen the cable gland and pull the cable against the socket wall towards the side of the locking tab.

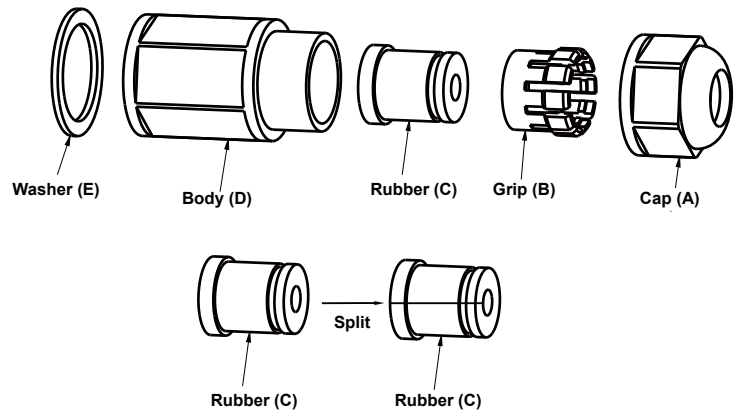


PoE Input Port Connector Assembly

IMPORTANT -

please follow the procedures below carefully to ensure the best seal:

1. Fit a RJ45 plug to the Cat5e/6 cable
2. Thread the Cat5e/6 cable through the cap(A) & grip(B)
3. Split rubber(C), rubber have two sizes for meet 4.5~6.5mm Cat5e/6 cable.
4. Fit the split rubber(C) over the Cat5e/6 cable
5. Thread the Cat5e/6 cable through the body(D)
6. Fit the washer(E) to the E69-201 / E69-202 connector
7. Plug the RJ45 connector on the Cat5e/6 cable into the E69-201 / E69-202
8. Hold E69-201 / E69-202 and then screw the body(D) onto the E69-201 / E69-202 connector tighten firmly
9. Push rubber(C) in the grip(B) and screw the cap tighten firmly. The Cat5e/6 cable is sealed when the rubber(C) & grip(B) bulges to the edge of the cap(A).



LED DEFINITIONS

PWR	Green ON	PoE IN port is connected to PSE.
	OFF	No PoE IN connection.
PoE	Green ON	Power over ethernet cable status
	OFF	Ethernet cable no Power
LAN	Green ON	Data link is detected.
	Green Flashing	Data is being transmitted or received.
	OFF	Link is not detected.

PoE DIP SWITCH DEFINITIONS

E69-201

DIP#	ON	Turn on PoE output for the PoE out port.
	OFF	Turn off PoE output for the PoE out port.

E69-202

Pin 1	ON	Port 1 Turn on PoE output
	OFF	Port 1 Turn off PoE output
Pin 2	ON	Port 2 Turn on PoE output
	OFF	Port 2 Turn off PoE output

All specifications are subject to change without notice.
Copyright © 2022 AETEK INC. All rights reserved.

AETEK INC.

6F, No.192-1, Lien-Cheng Rd., Chung-Ho, New Taipei City, 235, Taiwan, R.O.C.
| T: +886-2-82452822 | W: www.aetektec.com | E: sales@aetektec.com