

INTRODUCTION

| Model | Description |
|----------|---|
| SD-101 | Indoor 10M/100M/1G/2.5G bps surge protector against lightning or transient voltage |
| SD-102 | Indoor 10M/100M/1G/2.5G/10G bps surge protector against lightning or transient voltage |
| SD-201 | Outdoor 10M/100M/1G/2.5G bps surge protector against lightning or transient voltage |
| SD-202 | Outdoor 10M/100M/1G/2.5G/10G bps surge protector against lightning or transient voltage |
| SD-404 | 4-ch Modular 1G/2.5G PoE surge protector |
| SD-424 | 24-ch Modular 1G/2.5G PoE surge protector |
| SD-401-M | 1-ch PoE surge Modular for replacement |
| SD-424-C | 19", 1U 24-ch chassis |
| SD-504 | 4-ch Modular 1G/2.5G Smart IP PoE surge protector |
| SD-524 | 24-ch Modular 1G/2.5G Smart IP PoE surge protector |
| SD-501-M | 1-ch Smart IP PoE surge Modular for replacement |
| SD-524-C | Smart IP 19", 1U 24-ch chassis |

PACKAGE CONTENTS

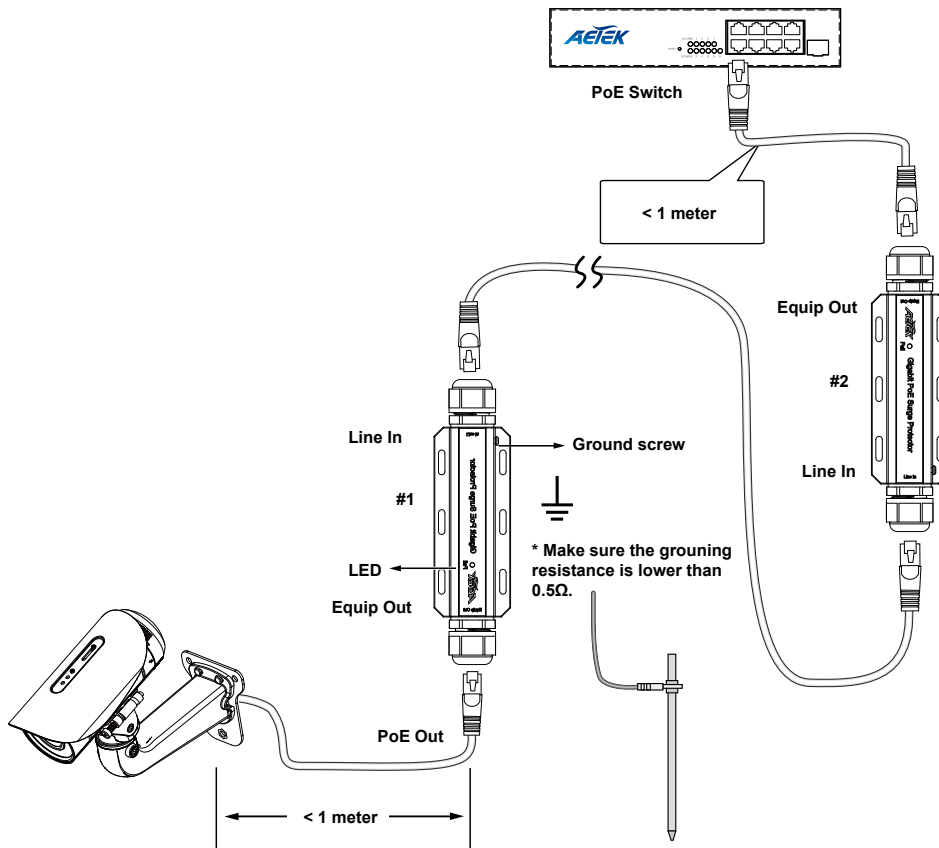
| | |
|----------------------|-------------------------------|
| * 1x surge protector | * 1x Quick Installation Guide |
|----------------------|-------------------------------|

⚠ IMPORTANT:

1. Use CAT5e or CAT6 UTP/STP cables.
2. The cabling distance between the surge protector and the protected device should be less than 1 meter.

CONNECTION

SD-101 / SD-102 / SD-201 / SD-202

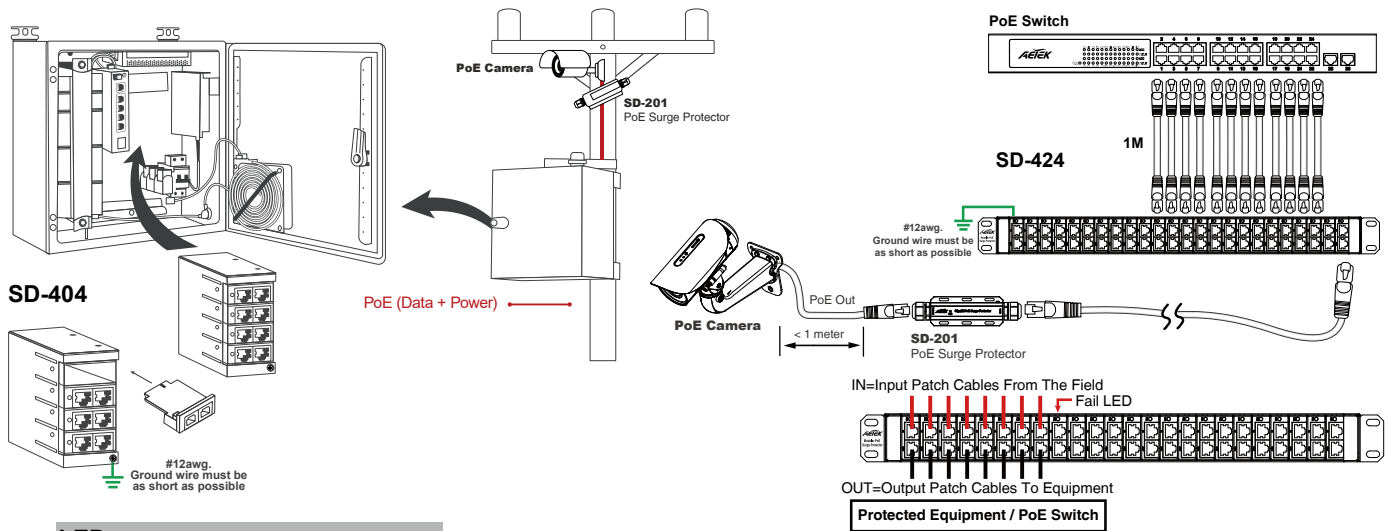


LEDs

LED definitions:

OFF when operating normally, ON when out of service life.

SD-404 / SD-424

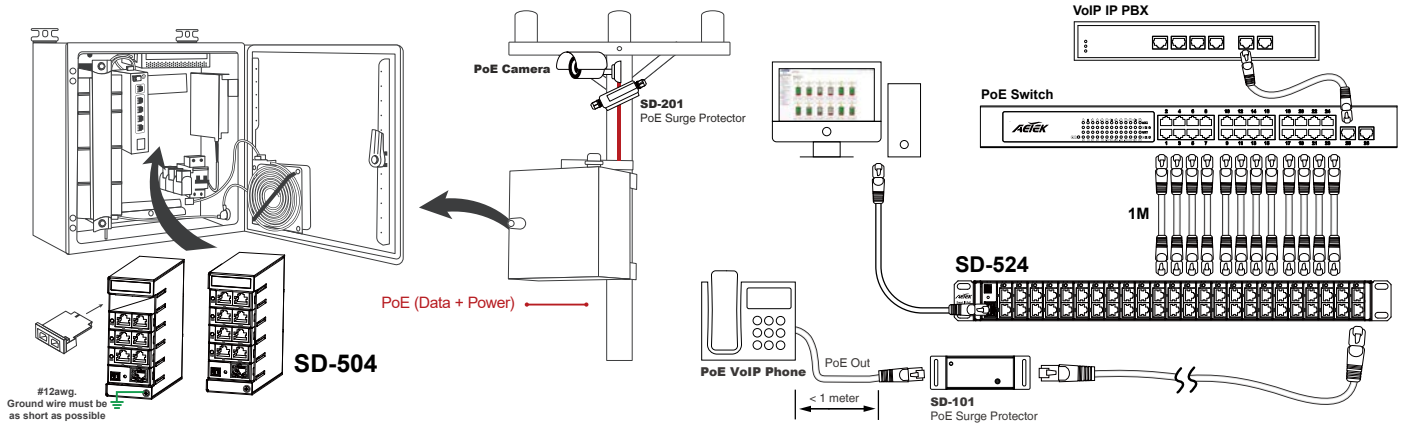


LEDs

LED definitions:

| | | |
|------|-----|---|
| Fail | Red | OFF when operating normally, ON when out of service life. |
|------|-----|---|

SD-504 / SD-524



DEFAULTS

| | |
|------------|-------------|
| IP Address | DHCP client |
|------------|-------------|

Account / Password

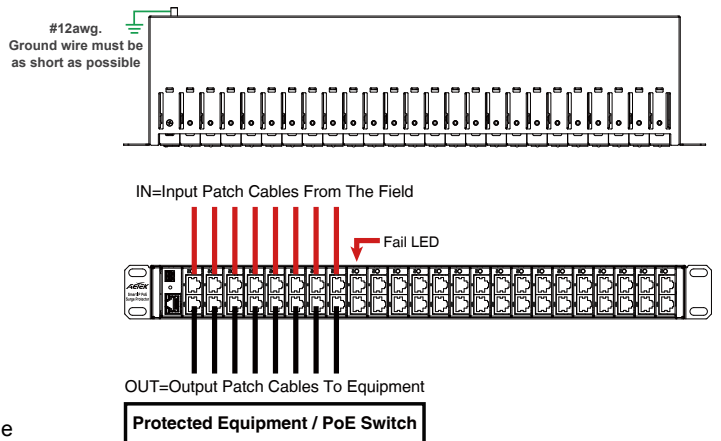
The device contains a security feature that requires a user to generate a new means of authentication before access is granted to the device for the first time.

Username

New password

New password confirm

The first time login need key in new username and password, please enter the new username and password, and then click the <Apply> button.



LEDs

Reset Button

Reset to default

15 seconds

| | | | |
|--------------|------|-------------|---|
| IP Module | LAN | Green flash | Data is being transmitted or received. |
| | | OFF | No connection. |
| | SYS | Yellow | ON: System is ready, Power is supplied. |
| Surge Module | Fail | Red | ON: Out of service life. |

All specifications are subject to change without notice.
Copyright © 2021 AETEK INC. All rights reserved.